



Quick Guide of Using Amazon Echo to Control Smart Devices

Value-added Service > Smart Voice > Third Party Tutorial

Version: 20210129

Contents

1	What you need to get started	2
2	Add devices in Tuya Smart App (Refer to App Instruction)	3
2.1	Download Tuya Smart App (Refer to App Instruction)	3
2.2	Register a Tuya Smart account and sign in to the App (Refer to App Instruction)	4
2.3	Add device and change device's name (Refer to App Instruction)	4
3	Set up Amazon Echo and enable Tuya Smart Skill	5
3.1	Set up Echo with Alexa app	5
3.2	Link Tuya Smart account to Alexa	11
4	Control your smart devices through Echo	14
4.1	Discover devices	14
4.2	Control devices by voice commands	15



Contents

<https://tps://www.youtube.com/embed/RyMKIFAMRoY>

1 What you need to get started

Before using Echo to control your smart devices, make sure you meet the following conditions.

- Stable Wi-Fi network which could access to Amazon server. (For mainland China users)
- An Echo device, including Echo, Echo Tap, or Echo Dot.
- An Amazon account. (If you don't have an Amazon account, [click here to register](#))
- Tuya Smart App and a related account.
- Smart devices.



ADD DEVICES IN TUYA SMART APP (REFER TO APP INSTRUCTION)

2 Add devices in Tuya Smart App (Refer to App Instruction)

You can skip this part if you've already added some devices to your Tuya Smart account, and in the meantime, the devices' names are easily recognized.

2.1 Download Tuya Smart App (Refer to App Instruction)

You can scan the QR code below to download the Tuya Smart App:



{width=100%}



ADD DEVICES IN TUYA SMART APP (REFER TO APP INSTRUCTION)

You can also search “Tuya Smart” in either App Store or Google Play to install the App. Note: Tuya Smart app is just an App name (for example), you can download your app.

2.2 Register a Tuya Smart account and sign in to the App (Refer to App Instruction)

Open the Tuya Smart App, tap “Register” to register an account, then sign in to the App.

2.3 Add device and change device’s name (Refer to App Instruction)

Sign in with the Tuya Smart account, add the device, then change the device name to an easily recognized word or phrase, like “bedroom light”.



3 Set up Amazon Echo and enable Tuya Smart Skill

We suggest using the web for configuration in mainland China since Alexa App is not available here.

Users can configure Echo through the web or Alexa App. Web configuration link: <http://alexa.amazon.com/spa/index.html>.

Search "Amazon Alexa" in App Store or Google Play to install the App.

We take App configuration as an example. Configuration through web and App are basically the same.

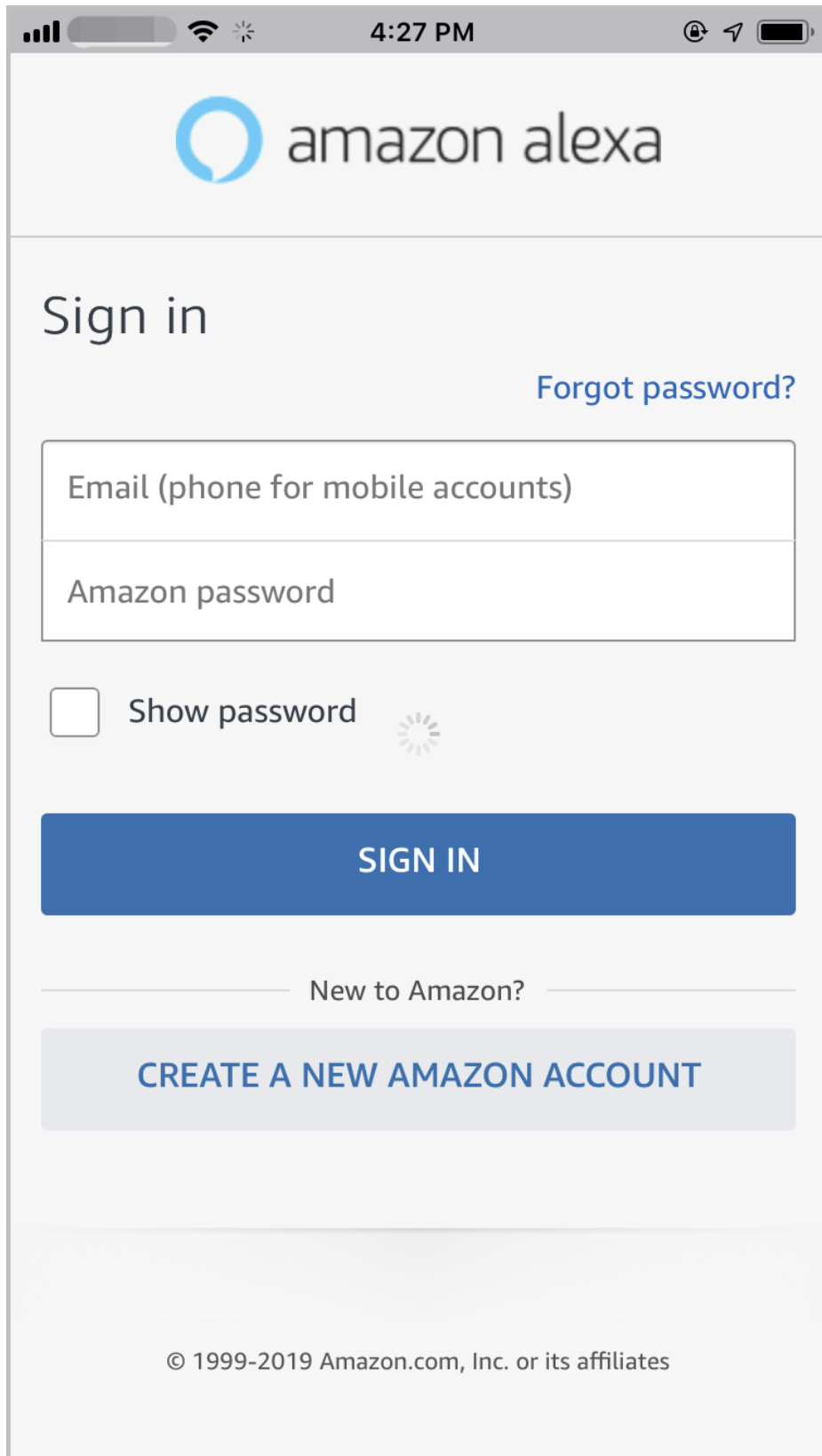
3.1 Set up Echo with Alexa app

You can skip this part if your Echo is already set up.

1. Make sure your Echo device is energized.
2. Make sure Echo is in a Wi-Fi network that can access Amazon services smoothly.
3. Open the Alexa App by tapping the App icon on your mobile device.
4. Type in your Amazon account and password, then tap "SIGN IN".

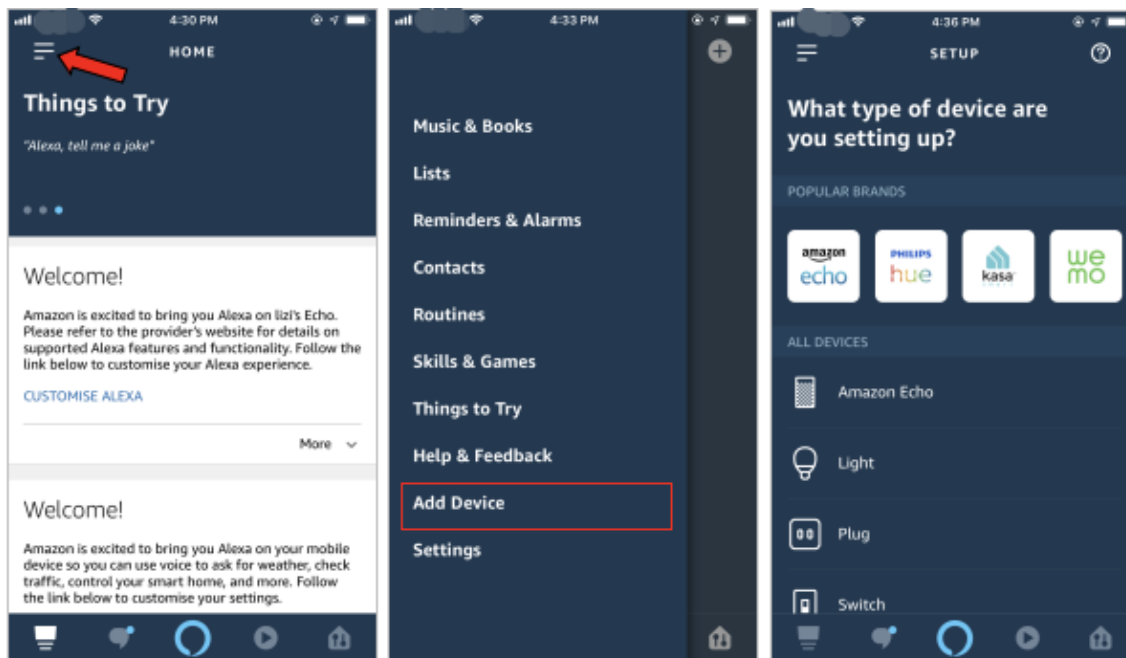


3 SET UP AMAZON ECHO AND ENABLE TUYA SMART SKILL

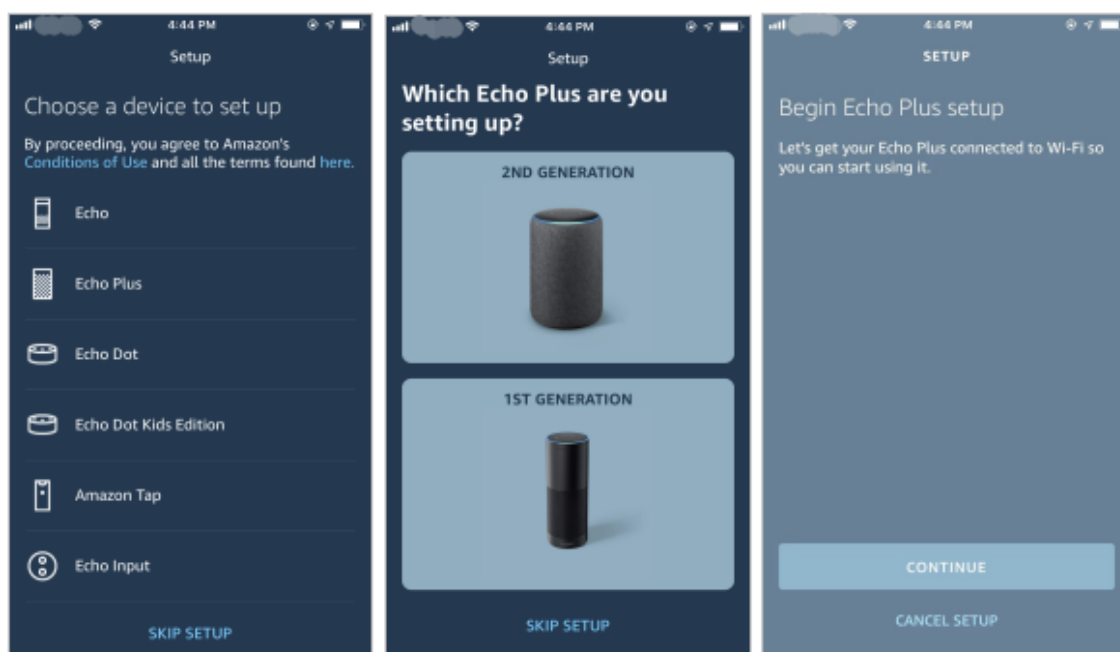


{width=50%px}

5. Tap the hamburger menu on the top left corner, select “Add Device”, Select Amazon Echo in the Set up page.

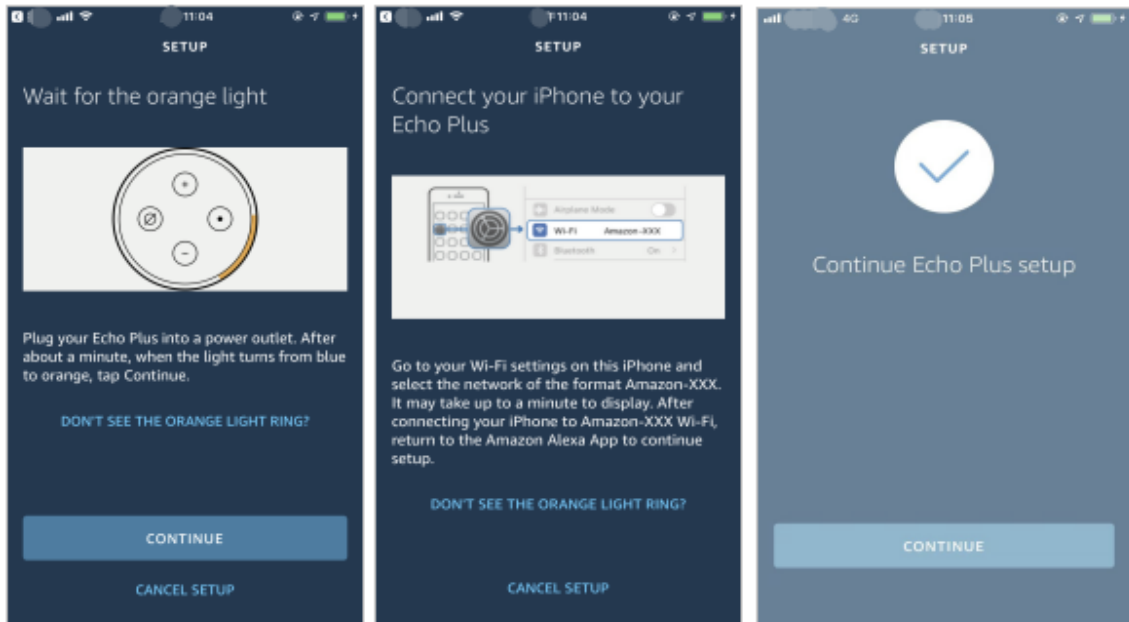


6. Select the type of your Echo, then tap “CONTINUE”.

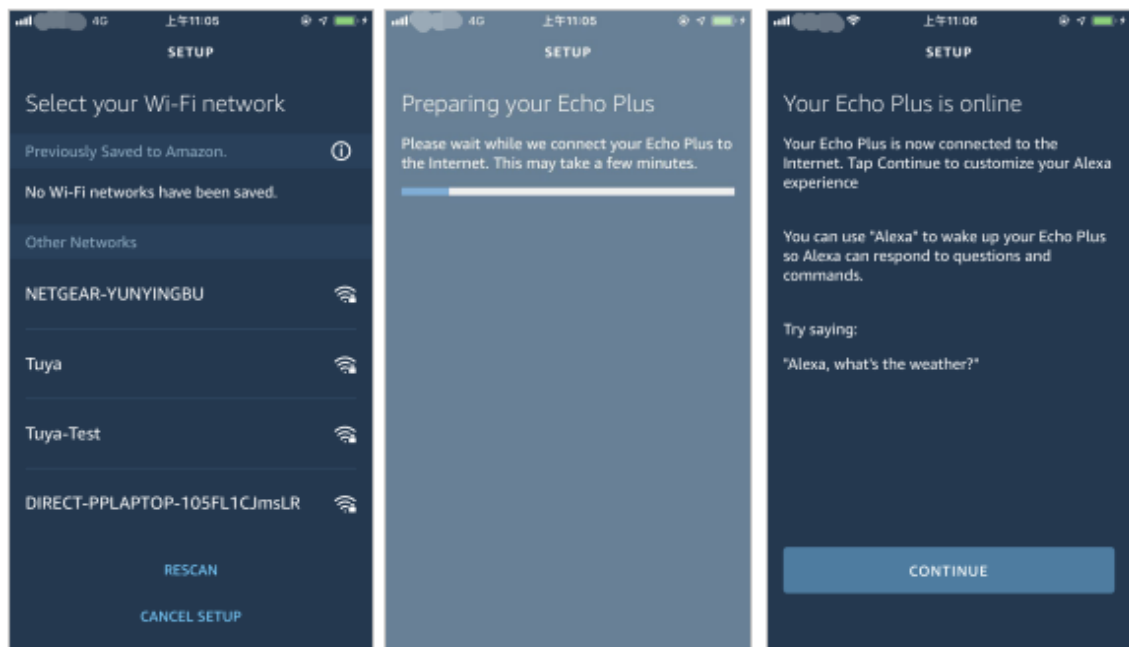


7. Long press the dot button on the top of your Echo device until the orange light shows up, then tap “CONTINUE”. Make your mobile phone connected to the

hot spot of Echo, then tap “CONTINUE”.



8. Select a Wi-Fi to let Echo have the access to the internet. Type in the Wi-Fi password, then tap “CONNECT”. Echo may take several minutes to connect the network.



9. Tap “CONTINUE” when Echo is connected to the network. After an introduction video, tap “NEXT” to finish the setup. At this point, the Echo configuration



3 SET UP AMAZON ECHO AND ENABLE TUYA SMART SKILL

process ends.

No SIM 15:41

INTRO TO ECHO

This short video will walk you through some basics to help get you started.

Let's take a quick tour of your new Amazon Echo.

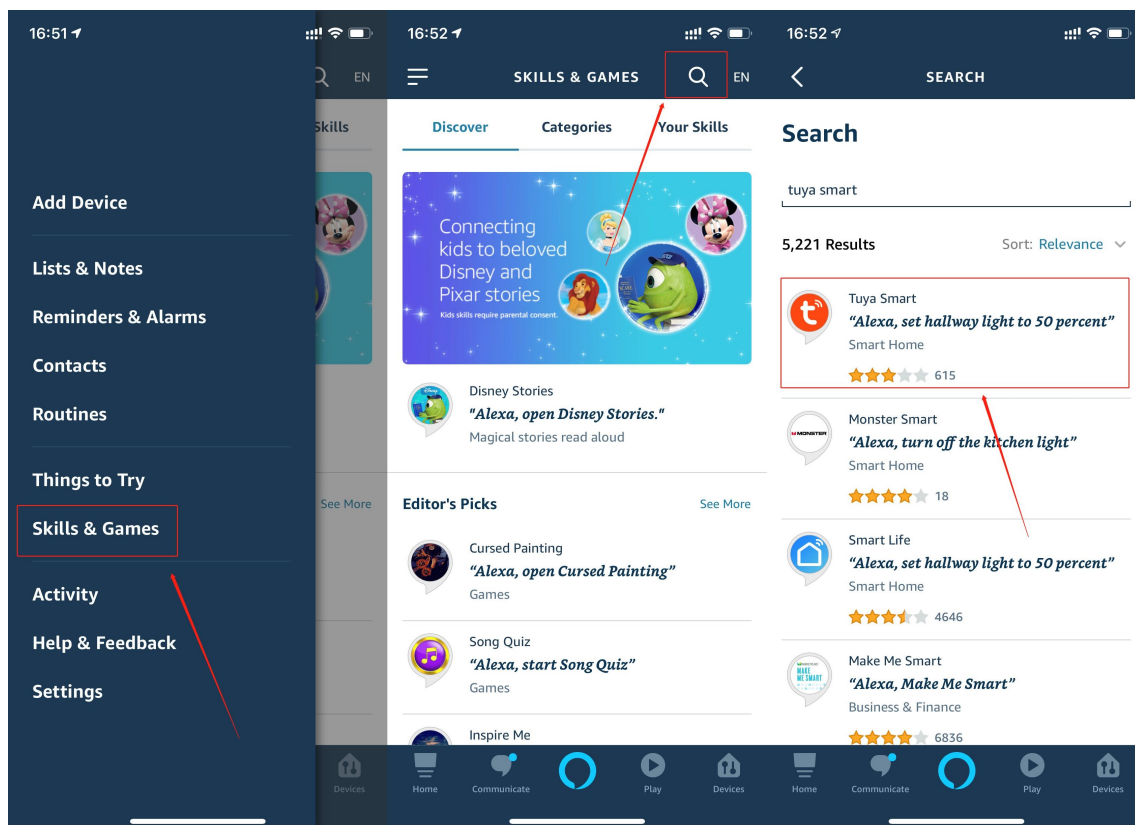
0:00 -2:15

NEXT

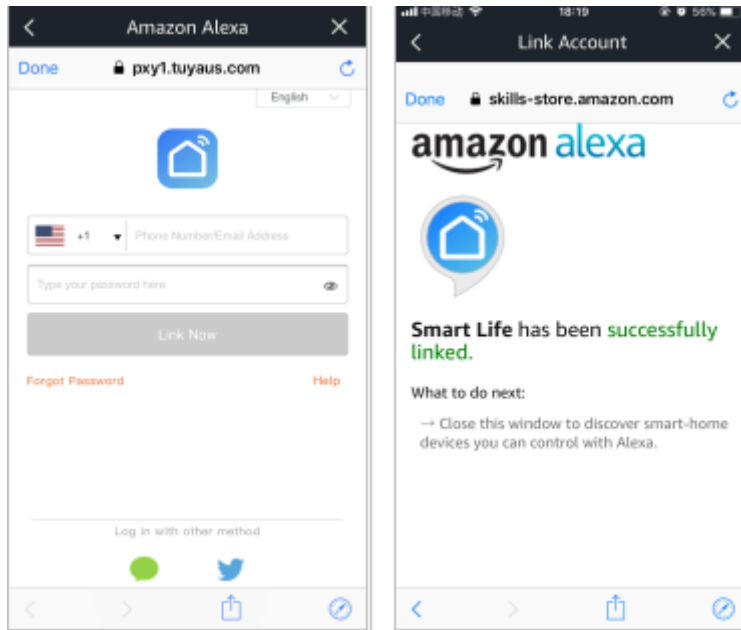
{width=50%px}

3.2 Link Tuya Smart account to Alexa

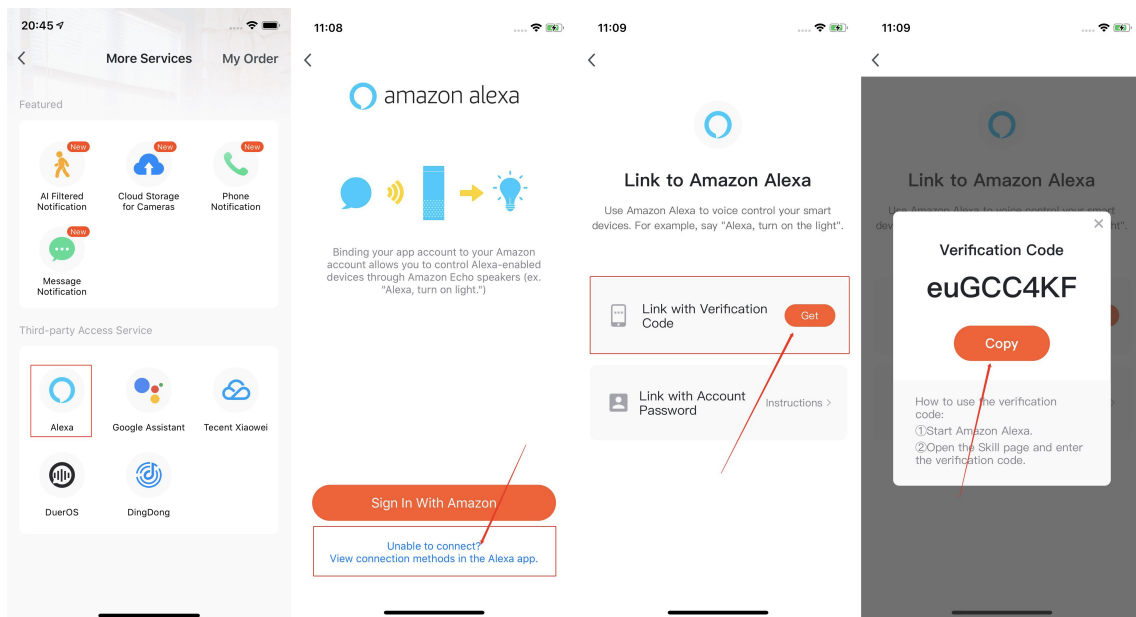
1. Tap “Skills&Games” in the hamburger menu, then search “Tuya Smart”. Select “Tuya Smart” and tap “ENABLE” to enable the Skill.



2. You will be redirected to the account link page. Type in your Tuya Smart account and password, don't forget to select the country/region where your account belongs to. Then tap “Link Now” to link your Tuya Smart account. The country/region, the account, and the password must match with the exact content in Step 2.2.

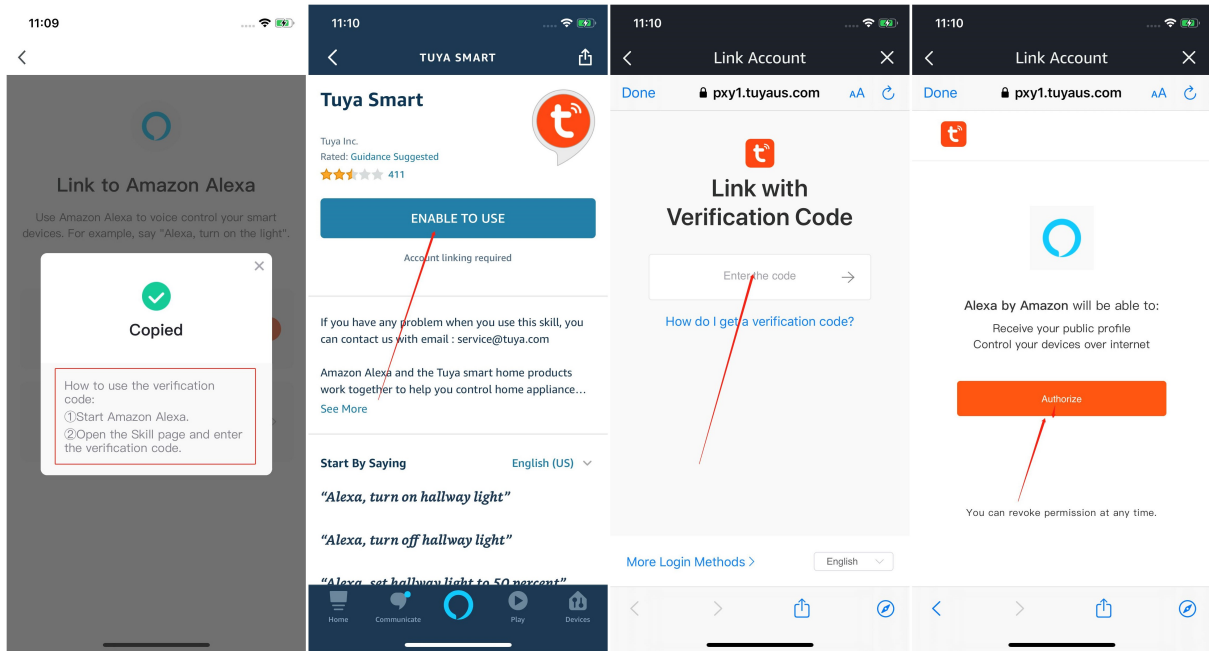


3. Link with Verification Code, open Tuya Smart App, click “Me—More Services—Alexa”.





3 SET UP AMAZON ECHO AND ENABLE TUYA SMART SKILL

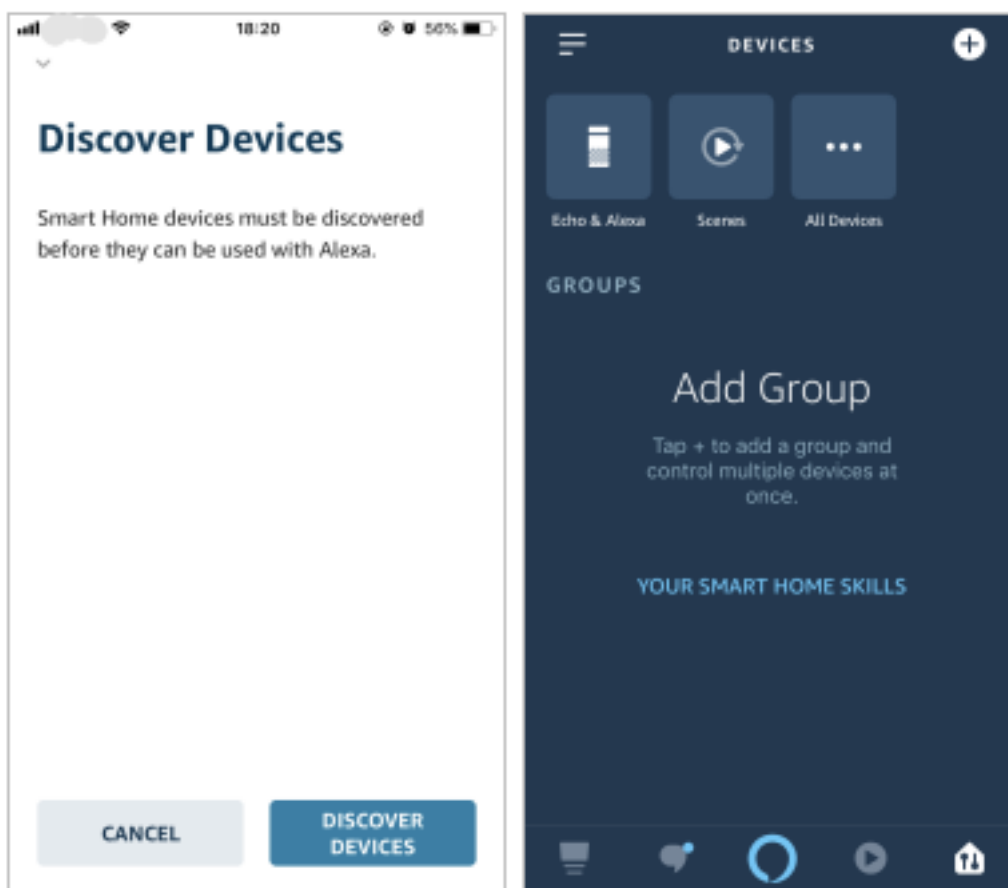


4 Control your smart devices through Echo

4.1 Discover devices

Echo needs to discover your smart devices before it controls them. After the skill binding is successful, the page as figure1 will appear automatically. Click “DISCOVER DEVICES” to discover the device, or you can say “Alexa, discover devices” to Echo. Echo will discover devices that have already been added to the Tuya Smart App.

You can also tap “DISCOVER DEVICES” to discover the smart devices. Discovered devices will be shown in the list (note: the “DISCOVER DEVICES” function can only discover devices that have been added in the Tuya Smart App, but cannot directly discover and add devices).



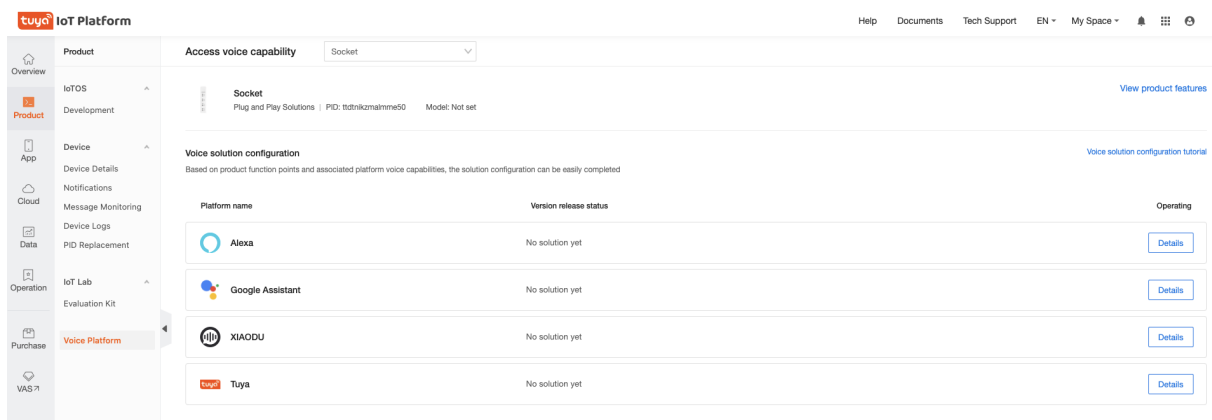
Note: every time you change the device’s name on Tuya Smart App, Echo must re-discover before you control them.

4.2 Control devices by voice commands




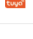
Now you can control your smart devices through Echo. You can use the following commands to control your devices (e.g., bedroom light):

- Alexa, turn on/off bedroom light.
- Alexa, set bedroom light to 50 percent.
- Alexa, brighten/dim bedroom light.
- Alexa, set to light to green.
- Alexa, set bedroom light to warm white.
- Alexa, set air conditioner to 24°C.

Notice: The voice commands that the product supported can be viewed in the **Tuya IoT platform-Voice Platform-Details**.



The screenshot shows the Tuya IoT Platform interface. The left sidebar contains navigation options: Overview, Product, Development, Device, App, Cloud, Data, IoT Lab, Operation, Purchase, and VAS. The main content area is titled 'Access voice capability' and shows a dropdown menu set to 'Socket'. Below this, there is a section for 'Voice solution configuration' with a table listing supported platforms.

Platform name	Version release status	Operating
 Alexa	No solution yet	Details
 Google Assistant	No solution yet	Details
 XIAODU	No solution yet	Details
 Tuya	No solution yet	Details